



Loving music



The Next Generation.

Content

Visions and Values	04 – 05
Turntables	06 – 27
Tonearms	30 – 39
Cartridges	40 – 47
Electronics	50 – 61
Record Cleaning Machines	62 – 67
Accessories	70 – 81
Company	82 – 87
Technical Specifications	88 – 95

Visions and Values

Peter Suchy: a skilful developer with a strong and clear vision. An engineer who is never content with the status quo and engages in ongoing research to drive continuous innovation. Suchy is a man who starts with the optimum and redesigns it until it reaches new levels of perfection and sets new standards. He represents the avantgarde of audio technology and has the ability to bring his extraordinary ideas to life. His philosophy of achieving the maximum possible is represented in every single cartridge, tonearm, turntable and accessory.

“Take the best and make it better,
only then is it just good enough.”

Peter Suchy is more than just the man behind the products. His dedication and personal commitment mean that he puts his heart and soul, knowledge and passion, into his work. These are qualities which Suchy's children Robert, Patrick and Veronika have inherited. They are taking forward the mission of further developing Clearaudio's products and exploring new fields of technology with one ultimate goal in mind: to reproduce recorded music with the best possible fidelity for generations to come.



Company founder and his philosophy: „Take the best and make it better, only then is it just good enough.“

1978 was the year of real breakthrough, the year Peter Suchy and his team developed Clearaudio's first moving coil cartridges. The patented fully symmetrical design and the choice of a boron cantilever were pioneering approaches which guide others to this day – while Clearaudio continues to refine them. 'Made in Germany' at Clearaudio stands for the highest quality, using high-end materials and the perfect technical implementation of intelligent innovation. Every product in Clearaudio's portfolio is conceived and produced by highly skilled specialists and precision engineers in the science city of Erlangen.

Since its inception, Clearaudio has amazed music lovers in more than 80 countries worldwide with analogue playback devices that set new standards of audio reproduction and constantly raise the bar a little higher. The range now also includes – in addition to high-end turntables, tonearms and cartridges – phonostages, preamplifiers, class A power amplifiers, connectors, cables and audio racks plus a wide range of accessories for maximum listening pleasure. The company has also embraced music production and now creates Clearaudio's own audiophile recordings and lovingly supervised re-releases of legendary classical discs once produced for the world famous Deutsche Grammophon.



Next Generation:
Robert Suchy, Veronika Suchy, Patrick Suchy (f.l.t.r.)

Statement

Take the best and make it better, only then it will be good enough. Based on this philosophy Clearaudio have been setting new standards in analogue music reproduction for more than 30 years. Based on their shared love for music, Peter, Robert, Patrick and Veronika Suchy have designed an exceptional new turntable that breaks the rules and boundaries of music reproduction. The results of their tireless passion and commitment are the outstanding Statement turntable and the Statement TT1 tangential tonearm, designed to reproduce music from vinyl records at the highest possible level.

The Statement turntable combines unprecedented functionality, beautiful design and superb engineering with innovative patented Clearaudio technology.

This fusion of extraordinary craftsmanship, attention to the smallest details and elaborate state-of-the-art production reflects the creative values of the Suchy family and their ongoing passion to build innovative turntables at the highest level that are inspiring and set new standards of performance.

Even the most minute musical details are faithfully reproduced. Nothing is added, coloured, distorted or lost. Let your ears relax as they hear only the music, the whole and complete musical performance.

Discover another dimension of music reproduction.





Statement





Turntables

Tonearms

Cartridges

Electronics

Record cleaning

Accessories

Company

Technical specifications

Statement TT1



They call it the pinnacle of analogue music reproduction: the patented Statement TT1 tangential tonearm developed by Clearaudio has been copied many times, but never matched. As its name implies, the TT1 represents the ultimate statement in tangential tonearm construction. This pinnacle of tangential tonearm technology is a key yardstick for Clearaudio's development team. With the Statement TT1, records are replayed as they were cut – in a straight movement with no curves. Hence the cartridge's stylus tracks the record groove perfectly without errors. In addition, Clearaudio uses a unique

passive technology: a self-sufficient tonearm drive with a purified mechanical design was created to combine optimal resonance values with maximum freedom from interference in the transmission of the music signal. In the TT series, Clearaudio uses accurately crafted high quality materials that are subject to ongoing quality control. Stability and value come first. Uncompromising consistency and ongoing innovation and development make Clearaudio a pacesetter in tangential tonearm technology, always moving towards the perfect audiophile listening experience.

Turntables
Tonearms
Cartridges
Electronics
Record cleaning
Accessories
Company
Technical specifications



Patented non-contact magnetic drive



Precise arm height adjustment allowing fine tuning of VTA, even during playback



Self-levelling mechanism with massive stainless steel pendulum



Damped, floating main chassis

Turntable Technology at its finest

The goal of high-end analogue is to perfectly merge technology, workmanship and design and subordinate them to one single target: the best possible music reproduction. At Clearaudio, all development, design and production remain firmly in the hands of a perfectly experienced and attuned team of specialists who never lose sight of that goal, and who uphold the Clearaudio philosophy and high quality standards.

From the tiniest part to the full audiophile 'Gesamtkunstwerk' (a complete work of art that draws on many art forms), at Clearaudio everything is meticulously made by hand – with maximum precision and plenty of passion. Precision-crafted mechanics and the use of components fine-tuned for density, mass and shape guarantee mechanical harmony and the absence of resonance when playing records. The ingredients are high-density multi-layered wood, titanium, stainless steel V2A, aluminium and specially developed high-performance plastics. Two parameters are of critical importance: maximum performance of music playback and technically effective design, as well as the aesthetic beauty of our creations.





Master Innovation – masterly optimized

The latest model in the popular Innovation series shows clearly how even the best is constantly being further developed and brought to new sonic heights at Clearaudio. The 70mm-thick, dynamically balanced platter made of resonance damping plastic with a 15mm-thick precision-machined stainless steel sub platter delivers the highest mechanical standards. The Master Innovation doubles the inertia of the Innovation. Incredible rotational speed stability is achieved thanks to the combination of the patented Clearaudio ceramic magnetic bearing (CMB) supplemented by an additional flywheel and a

high torque DC motor. An infrared sensor sends signals to an optical speed control mechanism to consistently maintain the perfect speed, while non-contact magnetic decoupling of the drive prevents any vibration or noise from the motor system from reaching the main turntable. Consequently, speed variations are eradicated and perfect pitch is obtained.

The Master Innovation provides the ability to mount up to three tonearms. Existing Innovation owners have the option to upgrade to Master Innovation level.



Master Innovation black
with TT1-MI tonearm

Turntables
Tonearms
Cartridges
Electronics
Record cleaning
Accessories
Company
Technical specifications



Speed selection and motor control



Possibility to install up to three tonearms, figure shows Clearaudio TT2 tangential tonearm



Contactless drive through magnetic platter



Possibility to install up to three tonearms, figure shows Clearaudio Universal radial tonearm



Master Innovation wood with TT1-MI tangential tonearm



Master Innovation wood with TT2 tangential tonearm

Innovation - perfect synchronisation

In the world of turntable construction the Innovation is the ultimate technological prototype. An infrared sensor combined with Clearaudio's optical speed control (OSC) ensures an outstanding level of speed stability – a prerequisite for optimal listening. A high-torque decoupled DC motor effortlessly rotates the precision-machined 70mm-thick platter made of

high-density acrylic. The platter rotates in a virtually friction-free environment atop the 15mm-thick stainless steel sub platter, thanks to Clearaudio's patented ceramic magnetic bearing (CMB). A convenient choice of three rotational speeds is also at your fingertips, and it is possible to install a second tonearm.



Innovation
black with
TT3 tangential
tonearm



Speed selection and motor
control

Turntables

Tonearms

Cartridges

Electronics

Record cleaning

Accessories

Company

Technical specifications



Detail clearaudio Universal tonearm and VTA-lifter



Clearaudio da Vinci V2 MC cartridge



Innovation wood with Universal radial tonearm

Innovation Compact - ticket to the top of the world

Perfectly matched materials meet patented Clearaudio technology. The 70mm-thick platter of the Innovation Compact consists of dynamically balanced polyoxymethylene (POM) and is powered by a high-torque DC motor with precision bearings, developed exclusively for Clearaudio. The Innovation Compact turntable with its very efficient design is nothing less than an audiophile revelation. Thanks to optical speed control (OSC), speed stability

values are obtained that lift this turntable into the global high-end class. The optimally designed chassis keeps resonances out of the audible range and guarantees maximum stability in a housing made of a massive panzerholz (bulletproof wood) and aluminium sandwich. Timeless design with quality built to last for decades. The option to mount a second tonearm makes it possible to play a rich variety of music from across the decades.



Innovation Compact black
with Magnify tonearm



Clearaudio Magnify radial
tonearm



Turntable height adjustment and
alignment

Turntables
Tonearms
Cartridges
Electronics
Record cleaning
Accessories
Company
Technical specifications



Innovation Compact wood
with Magnify tonearm



Detail of Clearaudio radial
tonearm headshell



The rear of the turntable,
showing the external power
supply input

Ovation - turntable of the year

Within a precision-machined chassis comprising a sandwich of aluminium and panzerholz bulletproof wood, 100,000 tiny metal balls eliminate any possibility of harmful resonances. Hidden under a 40mm-thick platter made of resonance-damping POM is a very quiet decoupled DC motor with high torque. The design of the Ovation seems both timeless and minimalist – maximum music enjoyment needs no embellishment. With Clearaudio's optical speed control (OSC) and ceramic

magnetic bearing (CMB), the Ovation achieves supreme speed stability and redefines the standards in its class. Audio journal 'The Absolute Sound' recognised the Ovation's superior qualities and declared it 'Turntable of the Year'.



Ovation
black with
Clarify radial
tonearm

Turntables
Tonearms
Cartridges
Electronics
Record cleaning
Accessories
Company
Technical specifications



Convenient speed control at the push of a button



Silver anodized aluminium surface



Magnetically floating aluminium precision sub platter



Ovation wood with Clarify radial tonearm

Performance DC – high-end for all

The Performance DC is a complete package designed to open up the high-end listening experience to those who prefer to avoid the selection and adjustment of separate cartridges or tonearms, and who simply seek the best in music reproduction. A newly developed DC motor with high precision bearings and belt drive, in conjunction with a platter of 40mm-thick POM which rests on a Clearaudio ceramic magnetic bearing (CMB), provide optimal conditions for the correct sampling of

the record groove. The elegant and simple appearance of the Performance DC with its clear lines matches its excellent audio performance. In combination with the Clarify tonearm and the Virtuoso V2 moving magnet (MM) cartridge, a turntable package has been created that leaves virtually nothing to be desired. Excellent tracking properties and hyper-accurate speed synchronisation ensure the ultimate listening pleasure.



Performance DC
package black / silver



Magnetically floating aluminium
precision sub platter



Detail of Clearaudio radial tonearm
headshell



Detail Clarify tonearm

Turntables
Tonearms
Cartridges
Electronics
Record cleaning
Accessories
Company
Technical specifications



Performance DC
package silver



Performance DC
package silver / black



Performance DC
package black



Detail Clarify tonearm

Concept

Clearaudio's vision for the Concept: design an elegantly styled turntable package featuring a level of ground-breaking technology usually only found in high-end turntables, combining plug-and-play simplicity with outstanding sound quality and affordability. The Concept achieves these highest of requirements, realising the Clearaudio vision.

Beneath the refined, contemporary exterior lies a level of technical sophistication unique to Clearaudio. The Concept's chassis comprises a core of natural medium-density wood fibre within an aluminium surround and upper layer incorporating a high tech synthetic compound. This composite of materials eliminates the detrimental effects caused by unwanted vibrations.

The DC motor is fed by an external voltage-stabilised power supply and is completely decoupled from the chassis, isolating the record from any mechanical interference. The Concept tonearm features a magnetic bearing that is friction-free for extremely low distortion and superb performance. The package is completed with the high-quality Clearaudio MM Concept cartridge. With the Concept turntable package, Clearaudio offers you an extremely innovative design that is very affordable.



$$\text{Concept} = \left[\frac{\text{price}}{\text{design} + \text{technology}} \right]$$



Concept - for open ears and eyes

The revolutionary Concept combines the highest quality of music playback with a design that has won several awards worldwide – including the German Design Award and ‘Best Turntable’ award from ‘What Hi-Fi? Sound and Vision’ magazine. With the Concept, to find an affordable entry point to the high-end world is a breeze. It reveals the magic of optimum sound reproduction even for those music lovers who could not previously afford this experience. You can buy the Concept in a package with specially developed moving

magnet (MM) or moving coil (MC) cartridges. A frictionless magnetic bearing tonearm is responsible for the optimal performance of the cartridges. All critical parameters from cartridge tracking weight to anti-skating are preadjusted in our factory. The Concept represents the ideal of stress-free ‘plug and play’: unpack, connect, put the record on the platter – and just enjoy music. There was never more audiophile technology in this class of turntables.



Concept



Turntables
Tonearms
Cartridges
Electronics
Record cleaning
Accessories
Company
Technical specifications



Convenient speed and motor control



Clearaudio Verify radial tonearm with frictionless magnetic bearing



Clearaudio Concept MM cartridge



Precision aluminium sub platter



Concept wood with MM or MC cartridge



Clearaudio Concept MC cartridge





Tonearms

Here at Clearaudio, we have developed new and better ways of satisfying the audiophile's needs. We offer an unparalleled selection of the three main types of tonearms: single point bearing radial, multi-point bearing radial and tangential tonearms. Our range of tonearms features many cutting-edge technologies, including several Clearaudio patented designs. Even the radial tonearms deliver ground-breaking technology and include many patented systems such as our cutting-edge magnetic bearings, as well as precision ball-race, unipivot, gimbal, and hybrid bearings.

Our sophisticated tangential technology is the perfect solution for those who really want to engage completely with the music and experience a flawless rendering all facets of sound. Each LP master is tangentially cut in production by the record-cutting lathe. Clearaudio tangential tonearms operate according to our patented, purely mechanical passive process and follow the exact same tracking path as the cutter head that made the master. Replay tracking angles are thus identical, and so mis-tracking distortion is virtually eliminated.





Statement TT1 & TT1 MI

tangential tonearms: one becomes two

They call it the pinnacle of tangential tonearm technology: Clearaudio's patented Statement TT1 has been copied many times, but never matched. Now this state-of-the-art tonearm has been further enhanced and reengineered as two distinct editions: the Statement TT1, designed specifically for the Statement turntable, and the TT1 MI, tailored for the Master Innovation and Innovation turntables.

With the Statement TT1 and TT1 MI, records are replayed exactly as they were cut – following a straight line across the record. The cartridge's stylus is positioned at a perfect tangent to the record groove, guaranteeing zero tracking error. No skating force is generated at playback so no anti-skating compensation is needed.

In both editions, Clearaudio use a unique passive technology: the self-driven tonearm is mounted in a suspended carriage, a purely mechanical design that combines optimal resonance

values with maximum freedom from interference in the transmission of the music signal. The new Statement TT1 and TT1 MI now also feature an enhanced arm carriage, designed to further reduce friction. In addition, the suspension of the carriage has been adapted to enable the use of more shallow-bodied cartridges.

Only the finest materials earn their place in the Statement TT1 and TT1 MI. The resonance-optimised chassis is precision machined from bullet-proof wood (Panzerholz) and aluminium. It glides backwards on stainless steel rails to allow record changing, then slides effortlessly back into the playback position and is held there with a magnetic locking system.

Uncompromising consistency and ongoing innovation make Clearaudio a pacesetter in tangential tonearm technology, always moving towards the perfect audiophile listening experience.



Tonearm TT1-MI, black

Turntables
Tonearms
Cartridges
Electronics
Record cleaning
Accessories
Company
Technical specifications



TT1 - MI headshell



TT1 - MI height adjustment



TT1 - MI lift arm



TT1 - MI detail



TT1 - MI level gauge



Tonearm TT1-MI, wood

TT2 - Masterpiece

It takes 40 hours to assemble the TT2 tangential tonearm. Clearaudio invests masterful production quality in this fine mechanical work of art, the basis for a hard to beat sound quality. The purely mechanical precision drive of the TT2 is based on two dry-running high-precision bearings and a polished glass tube that ensures almost complete freedom from friction. The subtle aluminium silver finish crowns the

TT2's highly functional design. This tangential tonearm with its weight of nearly two kilograms is completely stable, can be finely adjusted in height and is elegantly simple to use. A massive masterpiece that transmits the information extracted from the record groove more precisely and faithfully than ever before, with a decisive impact on the authenticity of the music playback.



TT2 tangential
tonearm



Elegant cueing and precise
height adjustment



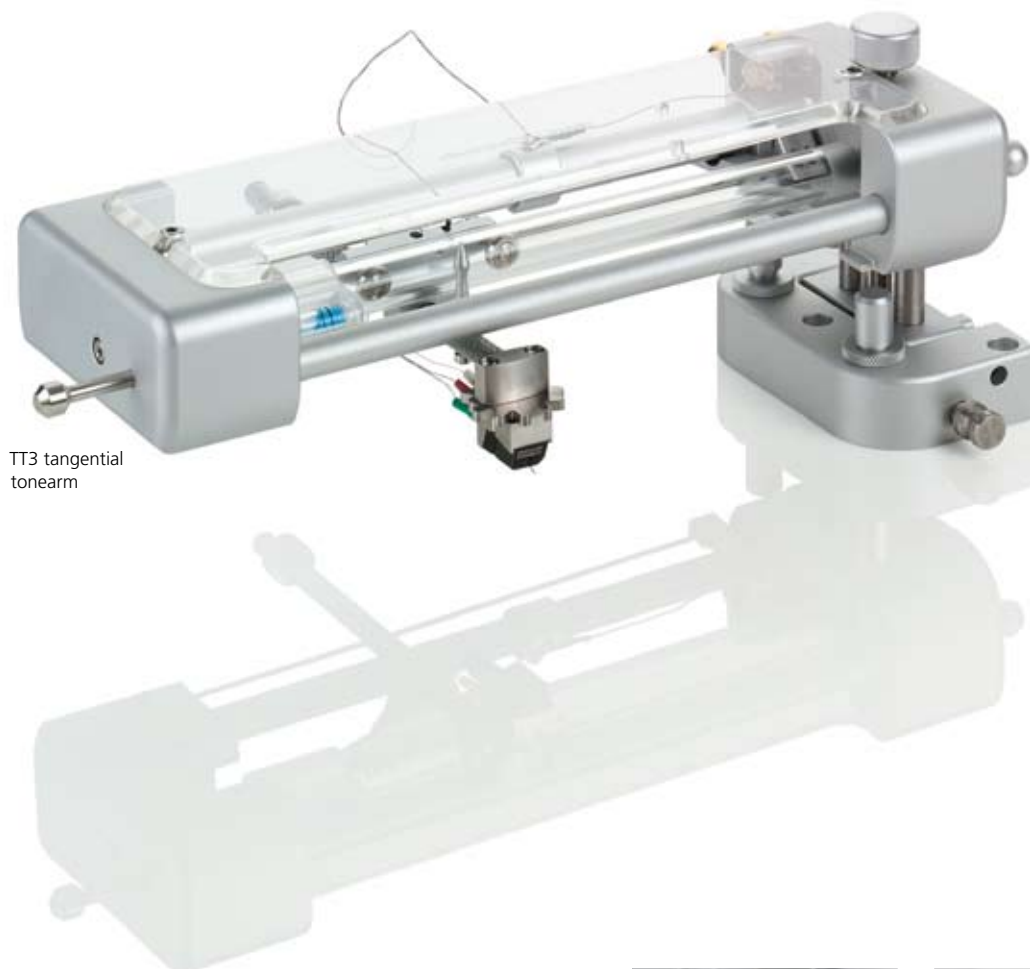
TT2 cartridge carrier

TT3 - High-End introduction

Turntables
Tonearms
Cartridges
Electronics
Record cleaning
Accessories
Company
Technical specifications

Even the smallest model in our series of tangential tonearms embodies the Clearaudio philosophy of uncompromising optimisation of the playback of records. The TT3 is totally mechanically controlled and requires no power assistance. This guarantees a flawless musical signal without noise. Polished glass and extremely smooth bearings provide friction free movement of the cartridge and minimum resonance.

The TT3 shares with its bigger brothers in the TT range an integrated mechanism for fine height adjustment and elegant cueing. Experience the power of audiophile music reproduction with an astonishing lack of distortion – hear music in its purest form without compromise.



TT3 tangential tonearm



Bubble level for precise tonearm adjustment



Elegant cueing and precise height adjustment

Universal - lightweight stability

A mechanical masterpiece of both design and functionality, Clearaudio's Universal (also available with VTA-Lifter) convinces by performance. High precision ball bearings in the vertical and horizontal axes guarantee that the tonearm provides the perfect conditions for the cartridge to track the record groove without adding any colouration or distortion. The arm tube is made of carbon, ultra stiff but lightweight, providing maximum stability and perfect tracking. The easy and exact

setting of azimuth and VTA are child's play – and with the optional VTA-lifter the adjustment of VTA can be done even while playing a record. The Universal is compatible with almost all popular cartridges, thanks to easily interchangeable counterweights and a fine scale which makes the precise adjustment of tracking force elegantly simple. Available in 9-inch and 12-inch lengths.



Universal 9-inch tonearm



Tonearm headshell and da Vinci V2 MC cartridge



Tonearm tube, made from extremely lightweight and highly rigid carbon fibre



Any weight of cartridge can be accommodated by virtue of the easily interchangeable counterweights

Magnify - new standard

Turntables
Tonearms
Cartridges
Electronics
Record cleaning
Accessories
Company
Technical specifications

Its hybrid bearing on high-precision balls and magnets make the Magnify tonearm something special. This innovative design not only ensures interference-free and resonance optimised playback, it also noticeably simplifies set-up and adjustment. The headshell and azimuth can be easily fine-tuned and with the optional VTA-Lifter it is possible to adjust the VTA even during playback. The Magnify is the result of careful optimisation to fully exploit the advantages of the extremely lightweight

carbon fibre material. This tonearm defines the standards – not least because it is compatible with many cartridges. It is equipped with high quality Clearaudio Direct Wire in a continuous run from the cartridge connectors to the tonearm cable plugs. A tonearm that stands for ultimate sound clarity.



Magnify tonearm



Fine adjustment of the anti-skating and the tracking force



Innovative hybrid bearing with magnetic and high-precision ball races

Clarify - smooth pleasure

If mechanical parts do not touch, there can be no friction. The Clarify tonearm uses magnetic bearings and is therefore completely frictionless. This Clearaudio innovation transmits even tiny signals without any interference and remains absolutely unaffected by resonances. The Clarify can be used

with virtually all cartridges with a weight from 2.5 to 19 grams, but reaches its maximum performance potential and richest sound when combined with the Ovation turntable and a Clearaudio moving coil (MC) cartridge.



Clarify tonearm



Fine micrometer-style adjustment of the tracking force



Friction-free magnetic bearing

Verify - elegant listening



Friction free magnetic bearing



Verify tonearm

The Verify tonearm presents Clearaudio's innovative and groundbreaking magnetic bearing technology in an elegant package. Super solid, resonance-optimised carbon fibre is the basis for a user-friendly radial design. The aluminium resonance-free headshell can be finely adjusted; the finely adjustable counterweight sets the exact tracking force. Stylish design and clean lines make the Verify a stunning eye catcher as well as providing precise signal transfer and a calm, clear sound. This beauty is wired with Clearaudio's high quality Direct Wire.

The Verify reaches its optimum sound when combined with the Concept turntable and corresponding Concept MC cartridge. For high-end music lovers and newcomers, this may be the most exciting complete turntable package of all time. But even on most other turntables the Verify embodies an affordable synthesis between breath-taking design and detail-rich sonority. Cartridges with a weight from 2.5 to 17 grams are ideal partners for the Verify.

Turntables
Tonearms
Cartridges
Electronics
Record cleaning
Accessories
Company
Technical specifications

Unify – high performance in a nutshell



Unify radial tonearm black



Unify radial tonearm silver

The Unify tonearm represents the summit of unipivot radial tonearms, and stands out not only for its elegant looks. A sapphire bearing and a hardened, precision polished steel tip are at the heart of a tonearm made of the best materials - and probably one of the best unipivot constructions in the high-end audio history. The base consists of a stainless steel pillar, the arm is made of carbon fibre and the bell is made of aluminium. This clever mix of materials guarantees resonance-free behaviour resulting in seemingly gigantic sound spectra

of vivid colours and rich detail. Effective weight reduction ensures that the friction in the single-point bearing approaches zero. The vertical and horizontal tracking angle are adjusted separately. The proven Sixstream Plus tonearm cable used in the Unify provides an unbroken signal path. Any passionate audiophile cannot fail to be enchanted by the Unify. This exceptional tonearm is available in 9, 10 and 12-inch lengths. Bespoke design options and special requests are also possible.



Cartridges - close to the mystery of music

Clearaudio have been engaged in ongoing research into moving coil technology since 1978. Compared with moving magnet systems, moving coil cartridges have the potential to extract even finer details from the record groove and to respond to dynamic changes significantly faster. Since the early days of our research, the improvement of sound quality has been driven steadily forward by using new materials and seeking new solutions to well known problems, such as setting new standards in the parameters of dynamic impedance, inductance and capacitance. Ingenious design and extensive scientific experimentation have allowed us to bridge the gap in performance between moving magnet and moving coil cartridges. Our top-of-the-range moving magnet cartridges incorporate many of the features of our moving coil cartridges. The Clearaudio MC generation V2 represents the state of the art for high-end MC cartridges.

Perfect symmetry for perfect sound reproduction: Clearaudio moving coil cartridge technology.

Only patented Clearaudio moving coil (MC) cartridges are symmetrical in all three important respects: magnetic, mechanical and electrical. Clearaudio MC technology is considered by both experts and music lovers to be the ultimate in audiophile music reproduction.

Since founding Clearaudio in 1978 Peter Suchy and his team have pioneered a series of novel ideas, subjecting every new development to meticulous scientific examination and ruthless testing. This tireless refusal to accept limitations and to strive toward new solutions and higher fidelity have enabled Clearaudio to reach peaks of innovation and technological development and to occupy a leading market position. Such outstanding specifications as a dynamic range of 100 decibels and a bandwidth of 20Hz to 100kHz speak for themselves. Countless hours are invested in our laboratories to make Clearaudio's flagship products even better and in so doing, the standard for the world's best to be redefined and many technological triumphs of analogue music reproduction have been achieved.

Each moving coil cartridge made by Clearaudio is an impressive demonstration of fine engineering and a milestone in high-end audio history: unique masterpieces with microscopic pure gold coils, handmade in Germany.

MC Goldfinger Statement – the ultimate dream

This cartridge deserves to play the best recordings of all time. In order to 'feed' the moving coil (MC) Goldfinger Statement with adequate music material, Clearaudio founded a music production department specialised in audiophile recordings of all genres. For the first time in a cartridge, the MC Goldfinger Statement features twelve magnets, perfectly matched and symmetrical enabling the system to reach a dynamic range of 100 decibels. For the Clearaudio engineering team this represents the fulfilment of an audiophile dream that seemed long unattainable. The MC Goldfinger Statement is also the first cartridge with integrated RF shielding.

The outstanding sound quality of this world-class cartridge is the stunning result of meticulously detailed development and fine-tuning of all of the important criteria. The breakthrough came with the use of a 30 per cent thinner 24-carat gold wire for the coils, a precision-milled gold mounting for the magnet array and a body made of solid 14-carat gold – essential core components for the ultimate cartridge masterpiece. The world famous Micro HD diamond stylus provides the best detail retrieval of all time. A flawless diamond on its facia beautifully adorns the MC Goldfinger Statement.

Peter Suchy calls this miracle of a cartridge „our magnum opus.“



Figures enlarged viewing

MC Titanium V2 – a jewel for your eyes and ears

This exceptional cartridge represents a work of art for the ages: its 95-decibel dynamic range delivers the optimum for current listeners and may well also set a benchmark for future generations. Through its technical perfection, the MC Titanium V2 embodies perhaps the most exciting combination of materials in audiophile history. Perfect resonance suppression is embodied within the twelve-finger platform design, which has become a standard-setter for aesthetic as well as functional design.

Thanks to the boron cantilever, Micro HD stylus and 24-carat gold coils in conjunction with a titanium body that weighs just eight grams, the highest linearity and transparency of analogue playback can be achieved with this gem of a cartridge. Audiophile dreams become audible.



MC da Vinci V2 – innovative classic

Classic design for contemporary art, which represents the current state of what is possible. The aluminium body of the MC da Vinci V2 is characterised by its extra hard, 30-micron thick ceramic coating that delivers extremely efficient resonance suppression. Its interior is so unique that it has been patented: eight magnets that provide massive focused field density guarantee perfect reproduction of audiophile recordings. The 24-carat gold coils of the MC da Vinci V2 are arranged in circular symmetry. This cartridge is an excellent example of combining cutting-edge research with meticulous craftsmanship to deliver outstanding results.

With a total weight of only seven grams, a Micro HD stylus, rigid boron cantilever and 90-decibel dynamic range, the MC da Vinci V2 provides all that is required to open up new horizons of sound dynamics and tonal homogeneity.



Turntables
Tonearms
Cartridges
Electronics
Record cleaning
Accessories
Company
Technical specifications

MC Stradivari V2 – the height of precision

A name to live up to. Meticulousness of design, spurred on by a goal of redefining the best and raising the bar ever higher, have led to a masterpiece of German craftsmanship. An impressive 80-decibel dynamic range is made possible through the use of patented V2 technology and of the finest high-end materials. This lightweight precision cartridge weighs only seven grams. It is the result of highly devotional microscopic craftsmanship – mastery of perfection in design and material selection. Important ingredients are a body of long-aged ebony, a precisely ground twelve finger platform and coils of 24-gold. The result: a stunning listening experience of almost unbelievable transparency and depth.



MC Concerto V2 – in the league of champions

With a dynamic range of up to 70 decibels and a total weight of only seven grams, the MC Concerto V2 qualifies itself for the top league of moving coil cartridges. Within this satin wood body the technology is outstanding, housing 24-carat gold coils and a patented eight-magnet array unique to our V2 range. Further champion-level ingredients are the boron cantilever and Micro HD stylus. A recipe to win the trophy of sound championship.



Figures enlarged viewing

MC Talisman V2 Gold – simple, elegant, great

Due to its patented symmetrical arrangement of eight magnets and 24-carat gold wire coils the new Talisman V2 redefines the performance available at this price level and reveals the sonic potential of the second generation 'V2' series of Clearaudio moving coil cartridges. The legendary combination of a rigid boron cantilever and Micro HD diamond stylus extract even the finest details stored in the record's groove both effortlessly and meticulously to deliver an unprecedented performance. The 10.8-gram hand-polished ebony body not only impresses with its discreet elegance, but also contributes to the clear, captivating sound of this cartridge by perfectly suppressing resonances.



MC Concept – reduce to the maximum

The MC Concept combines high-quality moving coil technology with a minimalist design. Here, audiophile explorers discover what the optimisation of magnetic circuits can deliver: this cartridge releases crystal clear sounds and represents nothing less than a revolution in its class. Equipped with a boron cantilever, the MC Concept has channel matching to within half a decibel, 11 ohms internal impedance and is fitted with a Micro Line stylus – features normally unheard of in this price range. All of which adds up to make this high-quality cartridge a bargain for the cost-conscious high-end fan.



Turntables
Tonearms
Cartridges
Electronics
Record cleaning
Accessories
Company
Technical specifications

MM cartridges

Clearaudio's V2 MM technology uses ebony as a resonance-resistant body. Other ingredients of the recipe for success are the most effective reduction of moving mass, an optimised polishing technique for the stylus and highly effective cartridge damping. This is precision engineering in the pursuit of the best sound.

The Clearaudio V2 moving magnet cartridges are meticulously measured, analysed, and hand-selected into four performance levels. In this way Clearaudio achieves the best stereo channel matching, minimum phase error and distortion, flattest frequency response and highest dynamic range at each

price point. The cartridges produce an audiophile sound of superlative quality – spatially detailed and vividly textured, with bass that does not wallow and treble that is not harsh. The models of the Clearaudio MM V2 series provide outstanding sound quality on all current tonearms.

With the exception of the MM V2 Concept, which is made of aluminium, all the cartridges in this series are made with housings of hand-polished ebony – the key to record-breaking weight values. The Performer V2 weighs just 7.4 grams, the Artist V2 8.4 grams. This is what Clearaudio calls 'effective reduction of the moving mass'.



MM Maestro V2



MM Virtuoso V2

Figures enlarged viewing

Turntables
Tonearms
Cartridges
Electronics
Record cleaning
Accessories
Company
Technical specifications



MM Artist V2



MM Performer V2



MM Concept V2





Electronics



Being specialised in analogue music playback, it is our responsibility to promote continuous technological development to create improved standards that establish audiophile listening pleasure at its highest level. Perfection in manufacturing and measurement is reflected in a superior sound: the purest listening quality, and the reason we put our concentration on even the tiniest detail.

Without exception, our phonostages are made of selected components of the highest material quality. At Clearaudio, to avoid any negative effects on the performance from the mains electricity voltages all power supplies being separated from the sensitive circuits. Clearaudio amplifiers are equipped exclusively with our own non-magnetic MPC RCA plugs. Because quality and uncompromising natural music reproduction only follow one rule: those who strive for excellence must be prepared to lead the way.



Statement Phono

The Statement Phono is at home at the absolute top – where the air is thin, but the sound quality reaches its maximum density. From the deepest bass to the highest treble, from the additional bass octave of an imperial grand piano to the piccolo flute of a full church organ and beyond, the Statement Phono presents sounds exactly as they are. It takes nothing away and does not add anything, but embodies the ideal of pure music reproduction. Silver mica capacitors ensure that the signals are handled without loss. Only the most noise-free resistors and capacitors, carefully selected, are worthy to take their place on the circuit boards of this monumental twelve-kilogram phonostage. This phonostage does not compromise.

But it does allow you to connect and control the volume of all major sources via two phono inputs and two additional analogue inputs.

For power, an external battery power supply is used, so that interference from the mains electricity grid does not exist. The Statement Phono embodies the ultimate truth of listening, and with its switchable input resistors and freely adjustable equalisation curves, addresses the needs of discerning analogue fans that want to extract the best sound from their records. This sound laboratory in miniature is unique and unmatched in the analogue world.



Turntables
Tonearms
Cartridges
Electronics
Record cleaning
Accessories
Company
Technical specifications



Statement Phono controls



Statement Phono remote control

Absolute Phono: full power from the source

Clearaudio's Absolute Phono is the world's first active headshell moving coil phonostage.

A tiny circuit board installed in the headshell of the tonearm amplifies the highly sensitive output signal from the cartridge at its source. Now the delicate signal only has to travel a few millimeters rather than along the usual 1-2 metres of internal and external arm wiring before being amplified to a more resilient level. This amplified signal then passes to the specially designed main RIAA phonostage, along a signal path free of the usual relays and coupling capacitors, which again enables a more clean, pure and accurate sound. The signal is then equalized and fed to both unbalanced RCA and balanced XLR outputs, each with its own output driver to ensure the utmost fidelity. The result? The signal to noise ratio is improved by approximately ten decibels across the entire audio spectrum.

The Absolute Phono is built without compromise, incorporating an anti-resonance sandwich construction machined from solid blocks of aluminium and panzerholz wood. The sophisticated power supply, located in a separate chassis, keeps mains interference to a minimum. Hand-selected state-of-the-art nonmagnetic silver Clearaudio Glimmer capacitors positioned at key areas of the circuit further ensure excellent clarity and purity of sound. A single multi-function switch for 'On', 'Off' and 'Mute' modes ensures a sleek finish.

The Absolute Phono is suitable for all Clearaudio tonearms and is designed to work perfectly with any moving coil cartridge from any manufacturer. This is ensured due to the selected current amplification control which eliminates the need to set the correct load resistance and load capacitance. The optimum operating condition is always set automatically.



Absolute Phono, black

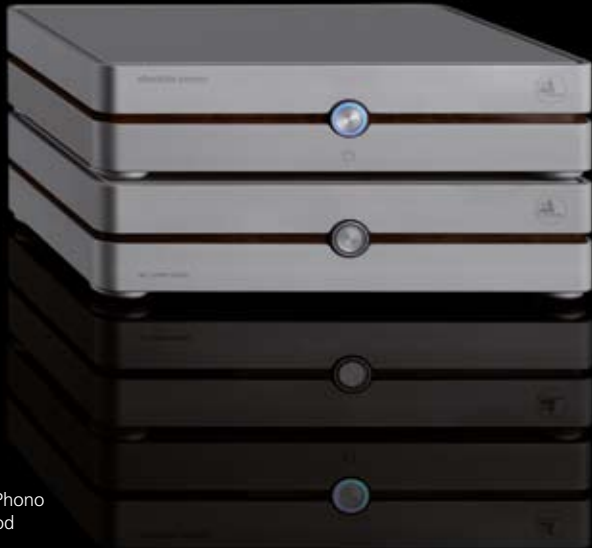


Absolute Phono back view

Turntables
Tonearms
Cartridges
Electronics
Record cleaning
Accessories
Company
Technical specifications



Absolute Phono headshell with Goldfinger Statement cartridge (cartridge is no scope of delivery)



Absolute Phono silver / wood

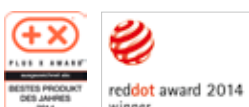
Absolute Phono Inside: a revolution and a revelation

The Absolute Phono Inside is a development of the Absolute Phono, designed for those who prefer not to have their tonearms modified to incorporate the headshell-mounted first gain stage. The Absolute Phono Inside uses the Absolute Phono's innovative circuit design including the current amplification first gain stage. However in the Inside, this is incorporated within the phonostage's main body. Through careful fine tuning, Clearaudio have been able to deliver many of the improvements sought about by the Absolute Phono in a more conventional phonostage configuration. Both unbalanced RCA and balanced XLR inputs are provided for connection to any tonearm on the market. These feed the fully balanced current amplification first gain stage, avoiding any need to set cartridge loading and thereby ensuring a perfect synergistic match with any moving coil cartridge. This amplified signal then passes to the specially designed main

RIAA phonostage, along a signal path free of the usual relays and coupling capacitors, which again enables a more clean, pure and accurate sound. The signal is then equalized and fed to the balanced XLR outputs. The result? The signal to noise ratio is significantly enhanced, almost matching the headshell-mounted Absolute Phono's ten decibel improvement. The Absolute Phono Inside is built without compromise, incorporating an anti-resonance sandwich construction machined from solid blocks of aluminium and panzerholz wood. The sophisticated power supply, located in a second, similar, matching, chassis, keeps mains interference to a minimum. Hand-selected state-of-the-art non-magnetic silver Clearaudio Glimmer capacitors positioned at key areas of the circuit further ensure excellent clarity and purity of sound. Like the Absolute Phono, a single multi-function switch for 'On', 'Off' and 'Mute' modes ensures a sleek finish.



Absolute Phono Inside,
silver/wood



Turntables
Tonearms
Cartridges
Electronics
Record cleaning
Accessories
Company
Technical specifications



Detail Absolute Phono Inside



Absolute Phono Inside multi-function button



Absolute Phono Inside back view



Absolute Phono Inside, silver / wood, back



Absolute Phono Inside, black

Balance +

With its superior performance, the Balance + phonostage would not be out of place in any professional studio. For maximum dynamic headroom and RIAA accuracy of less than 0.1dB, the components are fitted directly on the circuit board in custom aluminium blocks to minimise electrical and mechanical influences and reliably keep disturbances out of the amp. A precision tool for sound engineers which performs equally well as part of a domestic high-end system. The elegantly designed Balance + has a headphone output on the front

panel and a matching second chassis to house its external power supply. The addition of the Accu+ battery power supply makes the Balance + a three-chassis phonostage with an even higher performance.

Fitted with a high quality volume control the Balance + can also be directly connected to a power amplifier acting as a control preamp.

The Balance + phonostage reproduces the entire range of audiophile recordings unaltered.



Basic +

Turntables
Tonearms
Cartridges
Electronics
Record cleaning
Accessories
Company
Technical specifications

Behind the multiple award-winning Basic +, which outclasses many much more expensive competitors, there are over 30 years of research and experience, along with in-depth knowledge of the effectiveness of unconventional details. Via the optional Accu + power supply, the Basic + is even usable in a very low-interference battery mode where no stray electromagnetic interference can spoil the pure musical en-

joy-ment. The Basic + provides up to 60 decibels of gain at one kilohertz and automatically adjusts its input to perfectly match the cartridge fitted. With an equalisation accuracy of well below 0.2dB this 1.5-kilogram phonostage provides the acoustic pleasure of a very good concert hall.



Smart Phono V2 / Smart Phono Headphone V2

A minimalist aluminium housing that contains one of the best sounding phonostages in its market. Up to 54 decibels gain at one kilohertz and an extremely linear frequency response deliver unprecedented quality at this price point. For MM and MC cartridges there are two separate circuit designs

using SMD technology, which are selected by a slide switch on the underside. A light 620-gram phonostage that seduced the worldwide audio press. The only thing that is 'entry level' about this product is its price.

New: also available with headphone output.

Smart Phono V2



Smart Phono Headphone V2



Nano Phono V2 / Nano Phono Headphone V2

The Nano Phono phonostage isn't ruffled by anything. External interferences are no longer an issue with this fine piece of engineering. Its meticulously selected SMD components are assembled by hand in Erlangen and tested several times. The reward of these efforts is a signal to noise ratio of up to 84 decibels. The input impedance is set using plug-in links,

so there is no loss of quality when using different moving magnet and moving coil cartridges. The Nano Phono Headphone additionally contains a powerful headphone amplifier within the solid aluminium housing for private listening at the highest fidelity.

Nano Phono V2



Nano Phono Headphone V2



Accu Drive

The high performers in the Clearaudio turntable range - the Innovation series, Ovation and Performance DC - all use sophisticated decoupled high-torque DC motors. Even in the top models which employ technological advantages such as Clearaudio's optical speed control (OSC), the drive system is

vulnerable to degradation from a polluted mains power supply. Enter the Accu Drive: a revolutionary turntable DC power supply. It pairs twin lead acid batteries with a complex electronic security mechanism to protect against short circuit, overload, noise and voltage fluctuations. The Accu Drive's constant charging system maintains the batteries in optimum operating condition and feeds the turntable drive system with the perfect 24-volt with less than 0.2 mV deviation. The result is pitch stability and a purity of sound beyond expectation.

Accu Drive black



Accu Drive LED control

Smart Synchro

The synchronous motors used in Clearaudio's turntables achieve their best sound potential with a stabilized power supply such as the Smart Synchro power generator. This completely stable power supply provides peak performance at both 230 and 115 volts and features two

output frequencies that are separately adjustable between 47 to 89 hertz thereby providing electronic speed switching. By generating anew mains electricity supply with up to three watts of power, the motors are protected from interference from voltage fluctuations and power signal distortion.


Smart Synchro



Turntables
Tonearms
Cartridges
Electronics
Record cleaning
Accessories
Company
Technical specifications

Record Cleaning Machines





Records are valuable documents and important cultural artefacts. They deserve sympathetic care to preserve their sound quality - which, to date, has still not been matched by any digital playback systems. For high-end audio fans, a record-cleaning machine is an essential piece of kit to ensure vivid sound quality without crackles and to preserve the long life of your records.

Double Matrix Professional Sonic: deep record cleaning with sonic option

The cleaning of vinyl records is a key discipline in maintaining a high quality record collection and Clearaudio's research and development team continue to strive for the perfect equipment for the job. The Double Matrix Professional Sonic is our best solution yet.

The Sonic refers to a sonic option, in which sonic vibrations enable deep cleaning while being gentle and almost noise-free. Variable speed operation and static electricity removal as part of the cleaning process ensure perfect results.

Like a camera with dual automatic and manual functions, the Double Matrix Professional Sonic offers the possibility of operating the whole cleaning process at the touch of a single

button, as well as the ability to control each step in the process with a user-friendly operating panel.

The cleaning head automatically adapts to records of different diameters and thicknesses, and the microfiber cleaning strips are effortless to change. An LED light indicates the cleaning fluid level in the internal tank and, as an additional precaution, the suction turbine features overheating protection.

Made from high quality and heavy-duty materials, the Double Matrix Professional Sonic is designed for continuous operation, so that traders can clean complete record collections. And yet it is incredibly easy to use and maintain.



Double Matrix
Professional Sonic

Turntables
Tonearms
Cartridges
Electronics
Record cleaning
Accessories
Company
Technical specifications



Innovative washing unit



Innovative washing unit



Fluid control



Antistatic unit



Comfortable control unit



Innovative washing unit

Smart Matrix Professional

Deeply cleaned record grooves in just two minutes are no problem for the Smart Matrix Professional. This machine cleans records side by side in an extremely quiet way. Its minimalist

and handmade precision design make it an attractive piece of furniture fitting every lifestyle. Its quick and gentle cleaning will help to preserve the value of your record collection.



Suction device



Smart Matrix Professional controls

Accessories for record cleaning

Turntables
Tonearms
Cartridges
Electronics
Record cleaning
Accessories
Company
Technical specifications



Highly effective and gentle record cleaning fluid, available in different sizes



Pure Groove record cleaning brush



Replacement Micro fibre strips for Double Matrix and Double Matrix Professional Sonic



Replacement Micro fibre strips for Smart Matrix and Smart Matrix Professional





Accessories

Your personal listening habits and feelings influence your demand for high-end music playback – the dimension of sound in a concert hall, the complexity of an orchestra or the intimate play of an unplugged acoustic recording. Your music system should perfectly satisfy all of your preferences. Clearaudio have developed a wide range of key accessories – including cables and fine RCA plugs. As a high-end audio manufacturer, our first aim and top priority is to exceed your needs. Therefore, the ethos of our founder, Peter Suchy, is incorporated in every Clearaudio product: making the best even better!

Our commitment to quality extends to sophisticated record brushes and professional record cleaning machines, conceived and created for audiophile connoisseurs. An ongoing desire for musical perfection drives us to develop devices such as tuning elements that help any sound system to perform at its optimum. Achieve the peak playback capacity of your system with bubble levels, setting-up templates, record clamps and much more.

Enthusiasm drives innovation. As a team we are constantly developing new ideas to improve our products to new levels of perfection. All Clearaudio products share one significant feature: attention to detail throughout the development and manufacturing process.



Cables

Only those who work with the utmost meticulousness on the improvement of music playback know the extent to which power and signal cables influence the sound quality. Since the early days of Clearaudio, our engineers have undertaken ongoing research aimed at steadily improving the combination of music playback components and perfect power sources. The result is presented in a range of cable connections and special elements for clearly defined types of signals. Clearaudio has

the optimum cable for every need, from phono signals of small amplitude up to the massive power supply that needs high power connectors of the most sophisticated design.

Our know-how guarantees perfect insulation of the signal conductors, 100 per cent phase consistency and perfect channel balance. This makes the perfect sound: distortion-free, clear and natural.

Direct Silver Wire



Silver is the ideal conductor, especially for the delicate signal from a moving coil cartridge. In developing the Direct Silver Wire, Clearaudio have achieved their goal of producing the perfect tonearm wire. As the name suggests, the four signal-carrying conductors are made from pure silver, each with an individually polished surface and Teflon insulation.

A second layer of Teflon protects against vibration-induced distortion. A braided copper shield positioned at the optimal distance around the central core protects against radio and electromagnetic interference.

The silver conductors are incredibly fine, around half the diameter of those in other arm cables. This gives the tonearm absolute freedom of movement so it can respond to the tiniest details and paint an incredibly realistic musical picture.

The final ingredient in the perfect tonearm cable is the electrical impedance. Direct Silver Wire is optimized so that Clearaudio moving coil cartridges, or any other moving coil cartridges with similar electrical properties, are perfectly matched to provide absolutely flawless transmission of the complete musical signal from cartridge to phono stage.

Turntables
Tonearms
Cartridges
Electronics
Record cleaning
Accessories
Company
Technical specifications

Sixstream Plus

Sixstream Plus uses four extremely thin litz conductors twisted together in two separate pairs to form an internal core. Excellent shielding isolates this core, preserving the fine detail of delicate musical information.



Direct Wire Plus

The new Clearaudio Direct Wire Plus phono cable:

- Double mono construction with separate turntable ground wire.
- High purity oxygen-free copper conductors.
- Anti-microphonic insulation prevents vibration-induced noise.
- Balanced configuration provides enhanced performance.



Smart Wire

This entry-level cable provides audiophile performance by borrowing much of its symmetrical technology from the recording studio. The 6mm flexible outer sleeve makes it a versatile and very easy to use cable.



Clearline

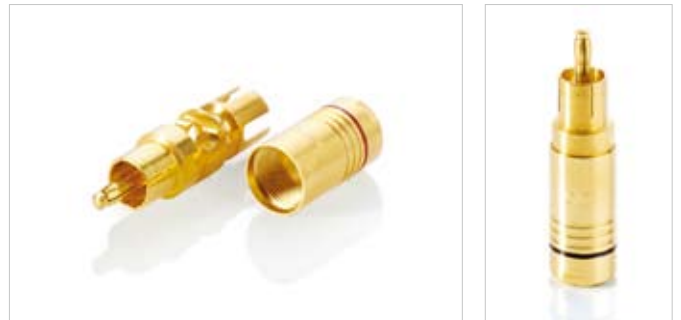
The energy passage from power amplifier to loudspeaker must be unhindered. Clearline's specially shaped twisting of nine separately insulated conductors allows maximum current transfer while maintaining the full integrity of every nuance of the musical signal.



Connectors

MPC - Cinch

The non-magnetic direct gold plated beryllium copper of this RCA plug guarantees an undistorted signal flow, providing the perfect partner for all RCA phono sockets.



Genius

Genius LS

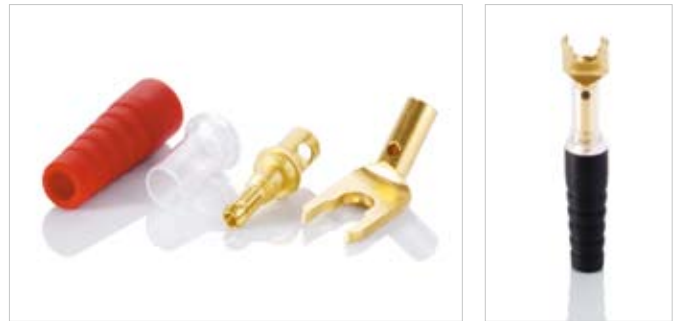
An universal loudspeaker connection that incorporates both a spade lug and a banana plug. Both connectors conform to all CE regulations and are completely non-magnetic.

MPC - banana

A CE compatible, direct gold plated, high quality non-magnetic 4mm banana plug that can accommodate very thick loudspeaker cables.

LS - spade

This spade terminal with its non-magnetic body and direct gold plated surface will provide the perfect connection of nearly all cables to all amplifiers and loudspeakers.



Turntables
Tonearms
Cartridges
Electronics
Record cleaning
Accessories
Company
Technical specifications

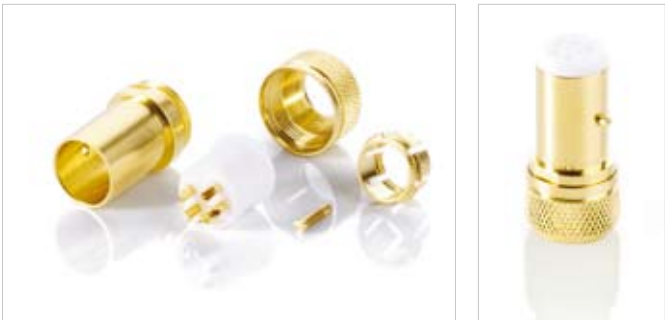
MPC - Cinch - socket

The non-magnetic beryllium copper body together with Clearaudio's special gold plating process ensure that this MPC phono socket offers supreme audiophile quality.



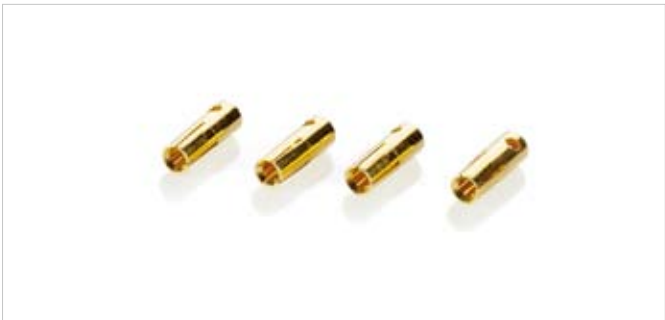
Tonearm - connector (DIN 5-pole)

A truly high-end 5-pin tonearm cable connector exquisitely manufactured from non-magnetic materials and finished with a pure gold plated surface. Precision sprung internal contacts ensure a perfect connection between tonearm and cable, maintaining the highest fidelity of the delicate phono signal.



MPC - cartridge pins

The delicate low-level signals from a phono cartridge need precise and very secure connections. Differing diameters of cartridge pins are accommodated by the spring-loaded fit of this connector, ensuring that no vital information is lost.



Clearaudio Racks

Clearaudio stands for excellent listening pleasure – and visual appeal. Therefore, we design our racks as highly functional home accessories for aesthetes: elegant and timeless in their appearance and well constructed down to the smallest detail. Only the best materials such as solid aluminium and panzerholz bulletproof wood are used to achieve the highest possible quality. Each platform is further enhanced with

aluminium surface plates. Even your heaviest devices will rest comfortably.

Very solid spikes decouple Clearaudio racks so effectively that they remain totally unaffected by resonance.

Each rack can be designed to be flexible in the number of levels and the total height. And your listening experience will reach a new level.



Turntables
Tonearms
Cartridges
Electronics
Record cleaning
Accessories
Company
Technical specifications



Rack detail, black



Rack detail, silver

Accessories

Enthusiasm Drives Innovation

Your personal listening habits and feelings influence your demand for high-end music playback – the dimension of sound in a concert hall, the complexity of an orchestra or the intimate play of an unplugged acoustic recording. Your music system should perfectly satisfy all of your preferences. Clearaudio have developed a wide range of key accessories – including cables and fine RCA plugs.

As a high-end audio manufacturer, our first aim and top priority is to exceed your needs. Therefore, the ethos of our

founder, Peter Suchy, is incorporated in every Clearaudio product: making the best even better!

Our commitment to quality extends to sophisticated record brushes and professional record cleaning machines, conceived and created for audiophile connoisseurs. An ongoing desire for musical perfection drives us to develop devices such as tuning elements that help any sound system to perform at its optimum. Achieve the peak playback capacity of your system with bubble levels, setting-up templates, record clamps and much more.



Weight Watcher digital cartridge tracking force gauge



Loupe



Professional Analogue Toolkit



LP Drill



Stylus cleaning brush



Elixir of Sound diamond cleaner

Turntables
Tonearms
Cartridges
Electronics
Record cleaning
Accessories
Company
Technical specifications



Smart Stylus precise cartridge tracking force gauge



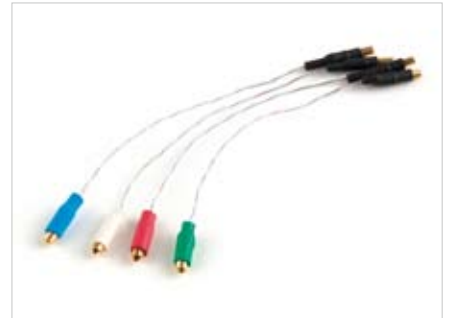
Headshell with SME-connection, including cartridge leads



Cartridge and tonearm IEC alignment gauge



Multi Installation Gauge (for Radial - and Tangential tonearms and cartridges, incl. Stroboscope)



Headshell cable set (also available in copper)



Clearaudio test record I



Clearaudio test record II



“Turboweight” counterweight for radial tonearms



VTA-Lifter, perfect height adjustment for radial tonearms



VTA-Lifter



Armboard for mounting radial tonearms



Armboard for mounting radial tonearms

Accessories



High Precision Level Gauge in stainless steel



Precision level gauge, mounted in a stainless steel ring



Clearaudio Leather Mat



Real time 300Hz light source with Stroboscope test record



Outer Limit with Locator



Vinyl Harmonicer turntable mat



Statement record clamp, 765g



Quadro Clamp record clamp, 360g, stainless steel



Twister record clamp, 190g



Concept record clamp, 215g



Clever Clamp record clamp, 20g

Turntables
Tonearms
Cartridges
Electronics
Record cleaning
Accessories
Company
Technical specifications



Single adaptor, precision machined stainless steel



Carbon fibre brush, antistatic



Micro fibre brush



Turntable Care Kit „Professional“



Clear Contact, electronic contact cleaner



Ceramic Magnetic Bearing (CMB)



Universal belt, silicon, available in 1mm or 2mm diameters



Dust cover, acrylic, different sizes available



Magic Points turntable feet



Perfect Points, silver (also available in black)



Clearaudio Vinyl Travel Bag

Company

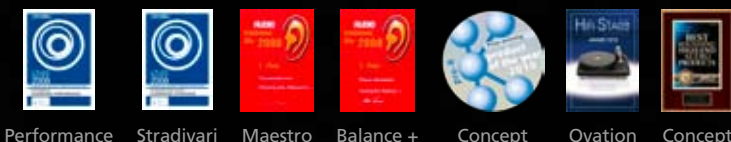
Welcome to the circle of winners! Every Clearaudio product comes from a family with many winners. Awards from the global audiophile press, as well as, internationally acclaimed awards such as the Red Dot Award and the Design Award of Germany, grace many Clearaudio developments.

We see this as both recognition and further incentive for our continuing research to find the most perfect sound reproduction. These awards also validate our belief that the fine art of music demands mechanical masterpieces made with sophisticated craftsmanship and a genuine love of music.

For more than 35 years we have been creating and manufacturing high-end solutions for people who share our love of music, with the aim of ensuring your ultimate listening experience: audible, palpable and even clearly visible in our advanced designs.

The standards we set ourselves are high – in design, aesthetics, function, quality and service. Your audiophile needs are our constant inspiration for new, reliable components that reflect sound reality as closely as possible. Existing products are re-tested continuously and optimised in detail. Our prototypes run through sophisticated test phases in which all product characteristics and parameters are analysed and perfected. Only when we are absolutely confident of quality and performance are our products released to the market.

Our commitment to the exceptional performance of our products is reflected in generous warranty services.



Performance Stradivari Maestro Balance + Concept Ovation Concept



Ovation Concept Concept Concept Concept Concept Concept Concept



Ovation Performance DC Absolute Phono Concept absolute phono Innovation Concept Ovation Absolute Phono



Company

Passionate and specialised staff, the highest quality materials, skilful workmanship, uncompromisingly accurate design and ingenious production technology – all taking place in Erlangen, centre of science and location of the world-famous Friedrich-Alexander University. Our city shapes and influences our aspirations and expertise.

In close proximity to the Fraunhofer and Max Planck Institutes, our engineers and mechanics research future technology – for ever greater acoustic quality.

Under the Clearaudio banner, highly trained perfectionists with innovative imaginations help to make audiophile visions come true.

To reach this aim, our technicians and engineers collaborate with a wide range of experts – including precision engineers, watchmakers, electronic engineers, physicists and industrial designers. The finest materials are then intelligently combined to produce impressive forms, parts and products that bear the unmistakable signature of Clearaudio. To preserve this signature for generations to come, we share our knowledge with ambitious young trainees. As a leading training company, we take social responsibility. With our headquarters in the Meilwald nature reserve we are even pioneering ecological sustainability.



Turntables
Tonearms
Cartridges
Electronics
Record cleaning
Accessories
Company
Technical specifications

You deserve the best: outstanding sound, flawless perfection. To achieve this maximum in performance and durability, Clearaudio invests a large amount of time. Analogue music playback is a demanding and specialised area of craftsmanship which requires considerable patience in order to achieve maturity in development and production.

To maintain our commitment to quality, we produce most of our precision components in-house. This requires ongoing investment in production capabilities and provides independence from OEM manufacturers – fundamental pillars of the Clearaudio philosophy, and the only way to ensure consistency, clear documentation, enduring quality and traceable results.

To reliably and precisely determine all measured data values, our engineers and technicians rely on leading technologies

and methods. When standard measurements are insufficient to meet our needs, our in-house engineers develop our own measuring devices, working closely with external researchers to meet the high demands of Clearaudio performance. This philosophy is the basis for stunning innovation and growing perfection.

Our collection of sophisticated measuring devices makes us the top leader in the development of moving coil pickups that define the world’s reference class.

Using these high level standards, one of the best phono preamplifiers on the market was made – of course a Clearaudio product. Your audiophile ears will be as convinced of the results as our engineers and measuring devices.

High-end at the highest level.





Turntables
Tonearms
Cartridges
Electronics
Record cleaning
Accessories
Company
Technical specifications

To ensure the highest level of quality, we must be able to monitor every step of the manufacturing process in real time. This is why we rely on in-house craftsmanship. Only a tiny proportion of our components are externally sourced – all exclusively from certified and specialised suppliers, usually found as locally as possible. All such component parts must fulfil strict Clearaudio requirements. Each product line undergoes a number of test steps. During the development of materials, continuous performance tests ensure optimum results. Clearaudio products leave our factory only after a careful and protocolled module test. And in the exceptional case of product damage, we retain all spare parts for up to 25 years after product launch – a unique feature appreciated by our customers.

In accordance with worldwide distribution requirements, Clearaudio’s products meet all international guidelines such as EMC, CE and UL. We combine passion with responsibility. Although our products are globally unique and distinctive, they adapt perfectly to the individual requirements of audiophile music lovers all around the world. Through this sophisticated strategy we fulfil our goal to support the preservation of analogue music reproduction, the importance of which has experienced renewed growth in recent years. Worldwide enthusiasm for audiophile listening is once again on the rise. Clearaudio delights in this development and will continue to drive it forward actively as a high-end audio pioneer.



Technical Specifications

Turntables



Model:	Statement	Tonearm TT1
Construction details:	Aluminium, stainless steel and bullet proof wood	High, precision mechanical, ultra low friction, linear tracking design.
Speed change:	Comfortable speed change, 33 1/3 rpm, 45 rpm, 78 rpm	–
Motor drive:	Non-contact magnetic drive system	–
Bearing:	Clearaudio magnetic bearing	–
Platter:	98 mm / 3.86 inch main platter	–
Zeile davor: Speedaccuracy (measured):	< ±0.03%	–
Power consumption switched off:	0 Watt	–
Total weight:	approx. 350 Kg	approx. 8.6 Kg
Dimensions (W/D/H in inch):	approx. 27.2 x 22.4 x 49.2	approx. 20.5 x 7.8 x 8.3
Dimensions (W/D/H in mm):	approx. 690 x 570 x 1250	approx. 521 x 199 x 211
Manufacturers guarantee*:	10 years*	10 years*



Model:	Master Innovation	Innovation
Construction details:	Resonance-optimised chassis shape, made of acrylic or laminated wood and aluminium with precision CNC machined surface. - All turntable feet are fine adjustable - Optical Speed Control (OSC) - Playback with three tonearms possible	Resonance-optimised chassis shape, made of acrylic or laminated wood and aluminium with precision CNC machined surface. - All turntable feet are fine adjustable - Optical Speed Control (OSC) - Playback with two tonearms possible
Speed change:	Comfortable speed change, 33 1/3 rpm, 45 rpm, 78 rpm	Comfortable speed change, 33 1/3 rpm, 45 rpm, 78 rpm
Motor drive:	- High torque DC motor - Electronic Optical Speed Control (OSC)	- High torque DC motor - Electronic Optical Speed Control (OSC)
Bearing:	Clearaudio CMB ceramic magnetic bearing in main platter / upper drive platter assembly Inverted bearing in lower drive platter	Clearaudio patented CMB - bearing technology
Platter:	15 mm (4/5 inch) precision CNC machined dynamically balanced stainless steel sub-platter 70 mm (2.75 inch) dynamically balanced main platter, made of synthetic material with excellent dimensional stability	70 mm / 2.75 inch main platter, made out of synthetic material with high density and excellent dimension stability, precision CNC machined surface, solid stainless steel sub-platter, dynamically balance
Speed accuracy (measured):	< ± 0.05 %	< ± 0.05 %
Power consumption switched off:	0 Watt	0 Watt
Total weight:	approx. 60 kg (without tonearm and power supply)	approx. 25 kg (without tonearm and power supply)
Dimensions (W/D/H in inch):	approx. 16.85 x 14.96 x 15.59 (without tonearm)	approx. 16.85 x 14.96 x 8.82 (without tonearm)
Dimensions (W/D/H in mm):	approx. 428 x 380 x 396 (without tonearm)	approx. 428 x 380 x 215 (without tonearm)
Manufacturers guarantee*:	5 years*	5 years*

*Only if the warranty card is filled out correctly and sent back within 2 weeks to Clearaudio
More information about the power consumption of our products on www.clearaudio.de

Turntables



Model:	Innovation compact	Ovation
Construction details:	Resonance optimised chassis's shape, belt driven with self adjusting speed control - All turntable feet are fine adjustable - Playback with two tonearms possible	Resonance-optimised chassis, recommended tonearm with magnetic bearing technology
Speed change:	Comfortable speed change, 33 1/3 rpm, 45 rpm, 78 rpm	Comfortable speed change, 33 1/3 rpm, 45 rpm, 78 rpm
Motor drive:	High torque DC-motor, exclusively made for Clearaudio electronic Optical Speed Control (OSC) in real time through infrared sensor	Decoupled DC motor in chassis, resonance damping device
Bearing:	Clearaudio patented CMB - bearing technology	Polished ceramic shaft in a sintered bronze bushing, magnetic bearing (CMB)
Platter:	70 mm / 2.75 inch main platter, made out of synthetic material with high density and excellent dimension stability, dynamically balanced	Made out of synthetic material, 40 mm thickness
Speed accuracy (measured):	< ± 0.08 %	± 0.03 %
Power consumption switched off:	0 Watt	0 Watt
Total weight:	approx. 12 kg (without tonearm and power supply)	approx. 13.5 kg (incl. Motor)
Dimensions (W/D/H in inch):	approx. 16.85 x 14.96 x 8.27 (without tonearm)	approx. 16.54 x 13.78 x 4.92 (without tonearm)
Dimensions (W/D/H in mm):	approx. 428 x 380 x 160 (without tonearm)	approx. 420 x 350 x 140 (without tonearm)
Manufacturers guarantee*:	5 years*	5 years*



Model:	Performance DC
Construction details:	Resonance optimised chassis's shape, belt driven
Speed change:	Comfortable speed change, 33 1/3 rpm, 45 rpm, 78 rpm (optional)
Motor drive:	Decoupled DC motor with low noise bearings
Bearing:	Clearaudio patented Magnetic bearing (CMB)
Platter:	Synthetic material, surface CNC-precision milled, Surface CNC-precision milled, 1.1 inch / 40 mm thickness
Speed accuracy (measured):	± 0.2 %
Power consumption switched off:	0 Watt
Total weight:	approx. 7 kg (incl. motor)
Dimensions (W/D/H in inch):	approx. 16.54 x 12.99 x 5.71 (with tonearm)
Dimensions (W/D/H in mm):	approx. 420 x 330 x 143 (with tonearm)
Manufacturers guarantee*:	3 years*



Model:	Concept MM V2 / Concept MC
Construction details:	- Resonance-optimised chassis - Friction free tonearm with magnetic bearing technology
Speed change:	Comfortable speed change, 33 1/3 rpm, 45 rpm, 78 rpm (optional)
Motor drive:	Decoupled DC motor with low noise bearings
Bearing:	Polished and tempered steel shaft in a sintered bronze bushing, runs on a mirror of Teflon
Platter:	Synthetic material, 30 mm thickness
Speed accuracy (measured):	± 0.04 %
Power consumption switched off:	0 Watt
Total weight:	approx. 7.5 kg (incl. motor, tonearm and cartridge)
Dimensions (W/D/H in inch):	approx. 16.54 x 13.78 x 4.92 (with tonearm)
Dimensions (W/D/H in mm):	approx. 420 x 350 x 123 (with tonearm)
Manufacturers guarantee*:	2 years

*Only if the warranty card is filled out correctly and sent back within 2 weeks to Clearaudio
 More information about the power consumption of our products on www.clearaudio.de

Technical Specifications

Tonearms



Model:	Tangential Tonearm TT1-MI	Tangential Tonearm TT 2	Tangential Tonearm TT 3
Construction details:	High, precision mechanical, ultra low friction, linear tracking design.	Patented two-point tangential tracking, resonance-optimized chassis Version: silver aluminium	Patented two-point tangential tracking, resonance-optimized chassis Version: silver aluminium
Drive	High precision, frictionless tangential scanning principle	<ul style="list-style-type: none"> - Strictly mechanical - Selected high precision ball bearings running in a polished glass tube 	<ul style="list-style-type: none"> - Strictly mechanical - Selected high precision ball bearings running in a polished glass tube
Total weight:	approx. 8220 g	approx. 1990 g (without tonearm base; base only: approx. 235 g)	approx. 670 g (without tonearm base; base only: approx. 235 g)
Dimensions (W/D/H in inch):	21.26 x 7.87 x 7.68	approx. 12 x 4 x 3	approx. 10.3 x 2 x 4
Dimensions (W/D/H in mm):	approx. 540 (incl. lift unit) x 200 x 195	approx. 300 x 100 x 70	approx. 260 x 50 x 100
Manufacturers guarantee*:	10 years*	5 years*	5 years*



Model:	Universal	Magnify
Construction details:	Genius radial tonearm using ultra low friction bearings. With plenty of fine adjustments e.g. the headshell's azimuth and VTA during playback.	The construction principle is based on the Exact tonearm and has been optimized in many details. The tonearm allows: <ul style="list-style-type: none"> - the user friendly fine adjustment of the Antiskating, even during the playback! - the setting of the magnetic damping is fine adjustable. - In combination with this innovative tonearm bearing design - Magnet - Ball bearing- Hybrid
Overhang:	17.31 mm	17.31 mm
Offset angle:	23.00°	23.00°
Distance from pivot to turntable centre:	222 mm	222 mm
Weight:	approx. 804 g (incl. Counter - Turboweight)	approx. 726 g (incl. Turboweight)
Mounting style:	Clearaudio	Clearaudio
Manufacturers guarantee*:	5 years*	5 years*



Model:	Clarify	Verify	Unify
Construction details:	Carbon Fiber, friction-free tonearm with magnetic bearing technology – micrometer-style precision adjustable counter weight	Friction free tonearm with magnetic bearing technology	One point sapphire bearing, carbon fibre/ stainless steel construction (9" - 14"), incl. Unify mount base, directwired with Clearaudio tonearm cable, terminated with Clearaudio MPC-rca-plugs,
Overhang:	17.31 mm	17.31 mm	17.31 mm
Offset angle:	23.00°	23.00°	23.00°
Distance from pivot to turntable centre	222 mm	222 mm	222 mm
Weight:	approx. 320 g approx. 410 g (incl. Counterweight)	approx. 200 g approx. 330 g (incl. Counterweight)	approx. 772 g (incl. Turboweight)
Mounting style:	Clearaudio	Clearaudio	Clearaudio
Manufacturers guarantee*:	2 years*	2 years*	2 years*

*Only if the warranty card is filled out correctly and sent back within 2 weeks to Clearaudio
More information about the power consumption of our products on www.clearaudio.de

Electronics-I



Model:	Statement Phono
Power Supply:	Fully symmetrical line and Accu - power supply
Signal to noise ratio:	5 mV/ 1kHz/ +50dB: - 90dB; 0.5 mV/ 1kHz/ +70dB: - 80dB
Distortion:	5 mV/ 1kHz/ +50dB: < 0.0035%; 0.5 mV/ 1kHz/ +70dB: < 0.015%
Gain (@ 1 kHz):	+ 54 dB = MC Mode; + 34 dB = MM Mode (switchable MPS (Menu Pre Setting))
RIAA:	± 0.05 dB / 20 - 100 kHz
Input load:	8 values, switchable RC (Remote Controller); 5R, 25R, 50R, 100R, 250R, 500R, 1k, 47k
Input impedance:	10 kOhm
Output impedance:	10 Ohm
Output voltage:	> 12V
Power consumption switched off:	0 Watt
Weight Preamplifier:	approx. 12 Kg
Weight Power supply:	approx. 22 Kg
Dimensions Preamplifier (W/D/H in inches) :	approx. 17.13 x 3.94 x 13.78
Dimensions Preamplifier (W/D/H in mm) :	approx. 435 x 100 x 350
Dimensions Power supply (W/D/H in inches) :	approx. 17.13 x 3.94 x 13.78
Dimensions Power supply (W/D/H in mm) :	approx. 435 x 100 x 350
Manufacturers guarantee*:	5 years*



Model:	Balance +	Basic +	Smart Phono V2 / Smart Phono Headphone V2
Mode:	MM / MC	MM / MC	MM / MC
Amplification at 1 kHz:	63dB (MC); 44dB (MM)	62 dB (MC); 41 dB (MM)	54 dB (MC); 34 dB (MM)
Input impedance:	510 Ohm / 220 pF / MC 47 kOhm / 270 pF / MM	510 Ohm / 270 pF (MC) 47 kOhm / 270 pF (MM)	50 Ohm, 100 Ohm, 500 Ohm, 1 kOhm, 5 kOhm / 150 pF, 250 pF, 400 pF (MC-Mode) 47 kOhm / 150 pF, 250 pF, 400 pF (MM-Mode)
MM / MC input:	switchable	switchable	switchable
RIAA (75µs/318µs/3180µs):	75µs / 318µs / 3180µs	75µs / 318µs / 3180µs	75µs / 318µs / 3180µs
RIAA accuracy:	± 0.1 dB	± 0.15 dB	± 0.3 dB
Distortion:	0.001% (IEC A)	0.003% (IEC A)	0.004 % (IEC A)
Signal to noise ratio:	74 dB (MC Mode) 89 dB (MM Mode)	65 dB (MC) 83 dB (MM)	72 dB (MC) 85 dB (MM)
Crosstalk:	> 92 dB (at 1 kHz) / opposed channel hot-wired	> 90 dB	> 90 dB
Max. output voltage:	10,5 V (at 1kHz)	10 V (1 kHz)	12 V eff (1 kHz)
Operation voltage:	± 18 V DC (external power supply)	± 25 V DC stabilised (external power supply)	± 18 V DC
Output connections:	Unbalanced (Cinch) Balanced (XLR)	Unbalanced (Cinch) Balanced (XLR)	asymmetrical (RCA)
Power consumption switched off:	0 Watt	0 Watt	0 Watt
Weight:	approx. 1.8 Kg (Preamplifier) approx. 2.5 kg (Power supply)	approx. 2.6 kg (Preamp and power supply)	approx. 620 g (Preamp and power supply)
Dimensions (W/D/H in inches):	approx. 7.09 x 8.66 x 2.17 (Preamplifier) approx. 7.09 x 7.28 x 2.17 (Power supply)	approx. 3.94 x 5.71 x 2.17 (Preamplifier) approx. 3.94 x 5.31 x 2.17 (Power Supply)	approx. 3.74 x 4.92 x 1.34
Dimensions (W/D/H in mm):	approx. 180 x 220 x 55 (Preamplifier) approx. 180 x 185 x 55 (Power supply)	approx. 100 x 145 x 55 (Preamplifier) approx. 100 x 135 x 55 (Power supply)	approx. 95 x 125 x 34
Manufacturers guarantee*:	3 years*	3 years*	3 years*

*Only if the warranty card is filled out correctly and sent back within 2 weeks to Clearaudio
 More information about the power consumption of our products on www.clearaudio.de

Technical Specifications

Electronics-II



Model:	Nano Phono V2	Nano Phono Headphone V2
Mode:	MM / MC mode switched by jumpers on the bottom of the unit	MM / MC mode switched by jumpers on the bottom of the unit
Amplification at 1 kHz:	54 to 68 dB (MC – Mode) 34 dB to 48 dB (MM – Mode)	54 to 68 dB (MC – Mode) 34 dB to 48 dB (MM – Mode)
Input impedance:	47 kOhm / 220pF / MM Individual / User / MC	47 kOhm / 220pF / MM Individual / User / MC
MM / MC input:	switchable (at bottom)	switchable (at bottom)
RIAA (75µs/318µs/3180µs):	75µs / 318µs / 3180µs	75µs / 318µs / 3180µs
RIAA accuracy:	± 0.4 dB	± 0.4 dB
Distortion:	0.04%	0.04%
Signal to noise ratio:	70 dB (A) (MC – Mode) 81 dB (A) (MM – Mode)	70 dB (A) (MC – Mode) 81 dB (A) (MM – Mode)
Crosstalk:	> 80 dB (1 kHz)	> 80 dB (1 kHz)
Max. output voltage:	10 V eff. (1 kHz)	10 V eff. (1 kHz)
Operation voltage:	18 V DC (external wall power supply, plastic housing)	18 V DC (external wall power supply, plastic housing)
Output connections:	Asymmetrical (RCA)	Asymmetrical (RCA)
Power consumption switched off:	0 Watt	0 Watt
Weight:	approx. 700 g (Preamp and power supply)	approx. 700 g (Preamp and power supply)
Dimensions (W/D/H in inches):	approx. 3.35 x 4.17 x 0.98	approx. 3.35 x 4.17 x 0.98
Dimensions (W/D/H in mm):	approx. 85 x 106 x 25	approx. 85 x 106 x 25
Manufacturers guarantee*:	3 years*	3 years*



Model:	Smart Syncro
Mains voltage:	115 / 230 V - 50 / 60 Hz (please specify version)
Fuse:	- at 115 V / T 0.25 A - at 230 V / T 0.125 A
Output voltage:	115 V / 230 V
Output frequency:	Adjustable: 47 - 89 Hz
Maximum output power:	3 Watt
Output:	IEC mains outlet socket
Power consumption switched off:	0 Watt
Weight:	approx. 570 g
Dimensions (W/D/H in inches):	approx. 3.94 x 5.39 x 1.38
Dimensions (W/D/H in mm):	approx. 100 x 137 x 35
Manufacturers guarantee*:	3 years*



Model:	Accu Drive
Input voltage:	100-240 V AC / 50 - 60 Hz
Fuse:	1A T
Output	24 V DC
Weight:	approx. 8.4 Kg
Measurements (in inch):	approx. 8.23 x 12.01 x 4.92
Measurements (in mm):	approx. 210 x 305 x 125
Power consumption switched off:	0 Watt
Manufacturers guarantee*:	3 years*

*Only if the warranty card is filled out correctly and sent back within 2 weeks to Clearaudio
More information about the power consumption of our products on www.clearaudio.de

Electronics-III



Model:	Absolute Phono (in Headshell)	Absolute Phono Inside
Power Supply:	Switching power supply Input: 50 - 60 Hz / 100 - 265 V AC	Switching power supply Input: 50 - 60 Hz / 100 - 265 V AC
Signal to noise ratio:	90 dB (A-weighted)	90 dB (A-weighted)
Distortion:	< 0.001 %	< 0.001 %
Gain (@ 1 kHz):	60 dB	60 dB
RIAA:	RIAA standard, deviation less than 0.1 dB	RIAA standard, deviation less than 0.5 dB
Output impedance:	64 Ohm (balanced XLR); 32 Ohm (unbalanced RCA)	64 Ohm (balanced XLR)
Power consumption switched off:	0 Watt	0 Watt
Weight Preamplifier:	approx. 3.25 Kg	approx. 3.25 Kg
Weight Power supply:	approx. 3.20 Kg	approx. 3.20 Kg
Dimensions Preamplifier (W/D/H in inches) :	approx. 9.45 x 6.30 x 2.56	approx. 9.45 x 6.30 x 2.56
Dimensions Preamplifier (W/D/H in mm) :	approx. 240 x 160 x 65	approx. 240 x 160 x 65
Dimensions Power supply (W/D/H in inches) :	approx. 9.45 x 6.30 x 2.56	approx. 9.45 x 6.30 x 2.56
Dimensions Power supply (W/D/H in mm) :	approx. 240 x 160 x 65	approx. 240 x 160 x 65
Manufacturers guarantee*:	5 years*	5 years*

Technical specifications

Record cleaning machines



Model:	Double Matrix Professional Sonic	Smart Matrix Professional
Construction principle:	<ul style="list-style-type: none"> - Left and right turning - Cleaning of both sides - Vacuum engine with overheat sensor - Integrated antistatic brushes device for discharge of static charge - Automatic fluid application - Sonic Option - gentle and high efficient cleaning through vibration - Automatic cleaning process with only one button - As an option: cleaning of each cleaning step by hand control 	<ul style="list-style-type: none"> - Left - right turning of the platter - Fluid application by hand - Very rigid and specially damped chassis
Power consumption:	500 Watt	460 Watt
Power consumption switched off:	0 Watt	0 Watt
Weight:	approx. 16 kg	approx. 12 kg
Dimensions W/D/H in inch:	approx. 16.22 x 15.16 x 10.63 (incl. Record clamp) approx. 16.22. x 15.16 x 15.94 (with Acrylic Dustcover)	approx. 13.58 x 13.58 x 9.84 approx. 13.58 x 13.58 x 10.83 (with Acrylic Dustcover)
Dimensions W/D/H in mm:	approx. 412 x 385 x 270 (incl. Record clamp) approx. 412 x 385 x 405 (with Acrylic Dustcover)	approx. 345 x 345 x 250 approx. 345 x 345 x 275 (with Acrylic Dustcover)
Manufacturers guarantee*:	3 years*	3 years*

*Only if the warranty card is filled out correctly and sent back within 2 weeks to Clearaudio
 More information about the power consumption of our products on www.clearaudio.de

Technical Specifications

Cartridges MC



Model:	MC Goldfinger Statement	MC Titanium V2	MC Da Vinci V2
Total mass:	~16.0 g	9.0 g	7.0 g
Frequency response:	20 Hz - 100 kHz	20 Hz - 100 kHz	20 Hz - 100 kHz
Stylus shape:	Micro Line	Micro Line	Micro Line
Cantilever:	Boron	Boron	Boron
Coil assembly:	Absolutely symmetrical design	Absolutely symmetrical design	Absolutely symmetrical design
Coil material:	24-Karat gold	24-Karat gold	24-Karat gold
Compliance:	15/15 µmN	15/15 µmN	15/15 µmN
Recommended tracking force:	2.8 g ±0.2 g	2.8 g	2.8 g
Crosstalk:	> 40 dB	> 40 dB	> 30 dB
Channel difference:	< 0.2 dB	< 0.3 dB	< 0.5 dB
Output voltage:	0.9 mV at 5cm/sec	0.8 mV at 5cm/sec	0.8 mV at 5cm/sec
Cartridge Impedance:	50 Ohm	50 Ohm	50 Ohm
Cartridge body:	14 kt Gold	Titanium	Aluminium with 30 micron ceramic coating
Manufacturers guarantee *:	2 years*	2 years*	2 years*



Model:	MC Stradivari V2	MC Concerto V2	MC Talismann V2	MC Concept
Total mass:	7.0 g	7.0 g	10.8 g	8.0 g
Frequency response:	20 Hz - 100 kHz	20 Hz - 100 kHz	20 Hz - 100 kHz	20 Hz - 40 kHz
Stylus shape:	Micro Line	Micro Line	Micro Line	Micro Line
Cantilever:	Boron	Boron	Boron	Boron
Coil assembly:	Absolutely symmetrical design	Absolutely symmetrical design	Absolutely symmetrical design	--
Coil material:	24-Karat gold	24-Karat gold	24-Karat gold	OFC - copper
Compliance:	15/15 µmN	15/15 µmN	15/15 µmN	9/9 µmN
Recommended tracking force:	2.8 g	2.8 g	2.8 g	2.0 g (± 0.2 g)
Crosstalk:	> 30 dB	> 30 dB	> 30 dB	> 30 dB
Channel difference:	< 0.5 dB	< 0.5 dB	< 0.5 dB	< 0.5 dB
Output voltage:	0.7 mV at 5cm/sec	0.7 mV at 5cm/sec	0.7 mV at 5cm/sec	0.42 mV at 5cm/sec
Cartridge Impedance:	50 Ohm	50 Ohm	50 Ohm	11 Ohm
Cartridge body:	Ebony wood	Satiné wood	Hand polished ebony wood with metal alloy internal resonance damping	Aluminium-Magnesium alloy with ceramic surface layer
Manufacturers guarantee *:	2 years*	2 years*	2 years*	2 years*

*Only if the warranty card is filled out correctly and sent back within 2 weeks to Clearaudio
More information about the power consumption of our products on www.clearaudio.de

Cartridges MM



Model:	MM Maestro V2	MM Virtuoso V2	MM Artist V2
Total mass:	8.4 g	8.4 g	8.4 g
Frequency Response:	20Hz - 20kHz	20Hz - 20kHz	23Hz - 20kHz
Output voltage (1kHz, 5cm/s):	~ 3.6 mV	~ 3.6 mV	~ 3.6 mV
Channel separation (1kHz):	> 30 dB	> 30 dB	> 24 dB
Channel balance (1kHz):	≤ 0.2 dB	≤ 0.2 dB	≤ 0.8 dB
Tracking ability:	90 µm	90 µm	80 µm
Tracking force (recommended 1.8 -2.6 g):	2.2 g ± 0.3 g	2.2 g ± 0.3 g	2.2 g ± 0.3 g
Coil impedance (1kHz):	0.66 kOhm	0.66 kOhm	0.66 kOhm
Coil inductance:	0.42 H	0.40 H	0.40 H
Load resistance:	47 kOhm	47 kOhm	47 kOhm
Load capacitance:	100 pF	100 pF	100 pF
Cantilever:	Bor/ HD Diamond	Aluminium	Aluminium
Cartridge body:	Ebony wood	Ebony wood	Ebony wood
Manufacturers guarantee*:	2 years*	2 years*	2 years*

Technical specifications



Model:	MM Performer V2	MM Concept V2
Total mass:	8.4 g	8.4 g
Frequency Response:	20Hz - 20kHz	20Hz - 20kHz
Output voltage (1kHz, 5cm/s):	~ 3.3 mV	~ 3.3 mV
Channel separation (1kHz):	> 20 dB	> 20 dB
Channel balance (1kHz):	≤ 1.5 dB	≤ 2 dB
Tracking ability:	80 µm	80 µm
Tracking force (recommended 1.8 -2.6 g):	2.2 g ± 0.3 g	2.2 g ± 0.3 g
Coil impedance (1kHz):	0.66 kOhm	0.66 kOhm
Coil inductance:	0.40 H	0.42 H
Load resistance:	47 kOhm	47 kOhm
Load capacitance:	100 pF	100 pF
Cantilever:	Aluminium	Aluminium
Cartridge body:	Ebony wood	Aluminium
Manufacturers guarantee*:	2 years*	2 years*

Find out more about Clearaudio products

Please see our English language website at:
www.clearaudio.de for full details of all Clearaudio products.
Or you can contact your local Clearaudio distributor or dealer
(listings of international distributors/dealers are given on our website at
http://www.clearaudio.de/_en/International.php).

Acknowledgements

Concept, artwork and production by
AUFSESS Kommunikation GmbH, Nuremberg, Germany www.aufsess.com
Many thanks to the State Museum for Art and Design in Nuremberg for their kind support.

Disclaimer

Technical specifications are subject to change or improvement without prior notice.
Clearaudio accepts no liability for any misprints.
Availability as long as stock lasts.
©Clearaudio electronic GmbH 2014
Use of any of the text or images contained in this brochure requires written confirmation from Clearaudio electronic GmbH.
Protective charge: EUR 15,-



Loving music



Clearaudio electronic GmbH

Spardorfer Str. 150 | D-91054 Erlangen | Fon: +49.9131.40 300 100 | Fax: +49.9131.40 300 119 | info@clearaudio.de

Made in Germany

www.clearaudio.de
www.analogshop.de

#130609
aufsess.com